

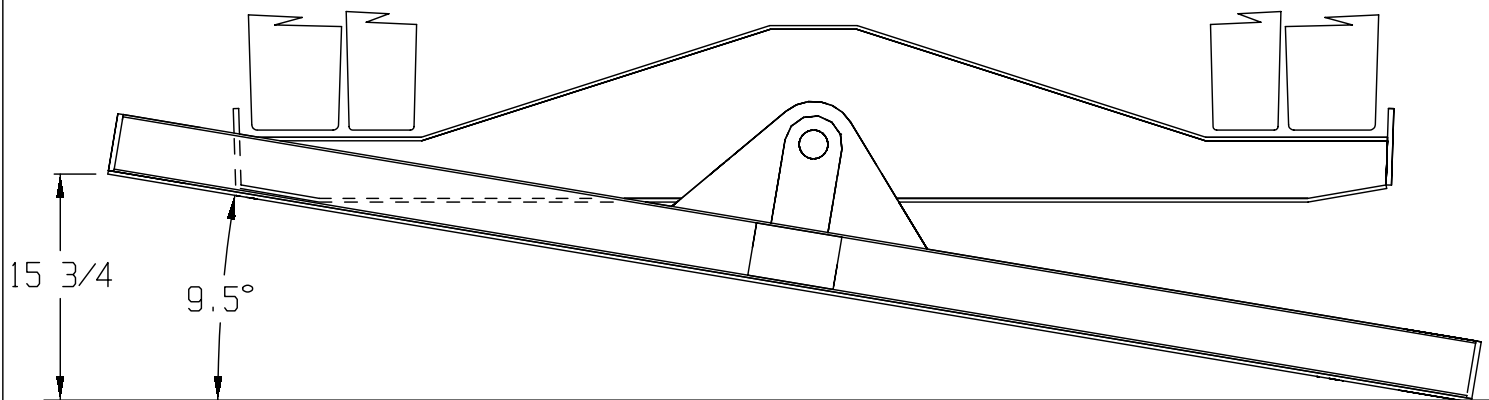
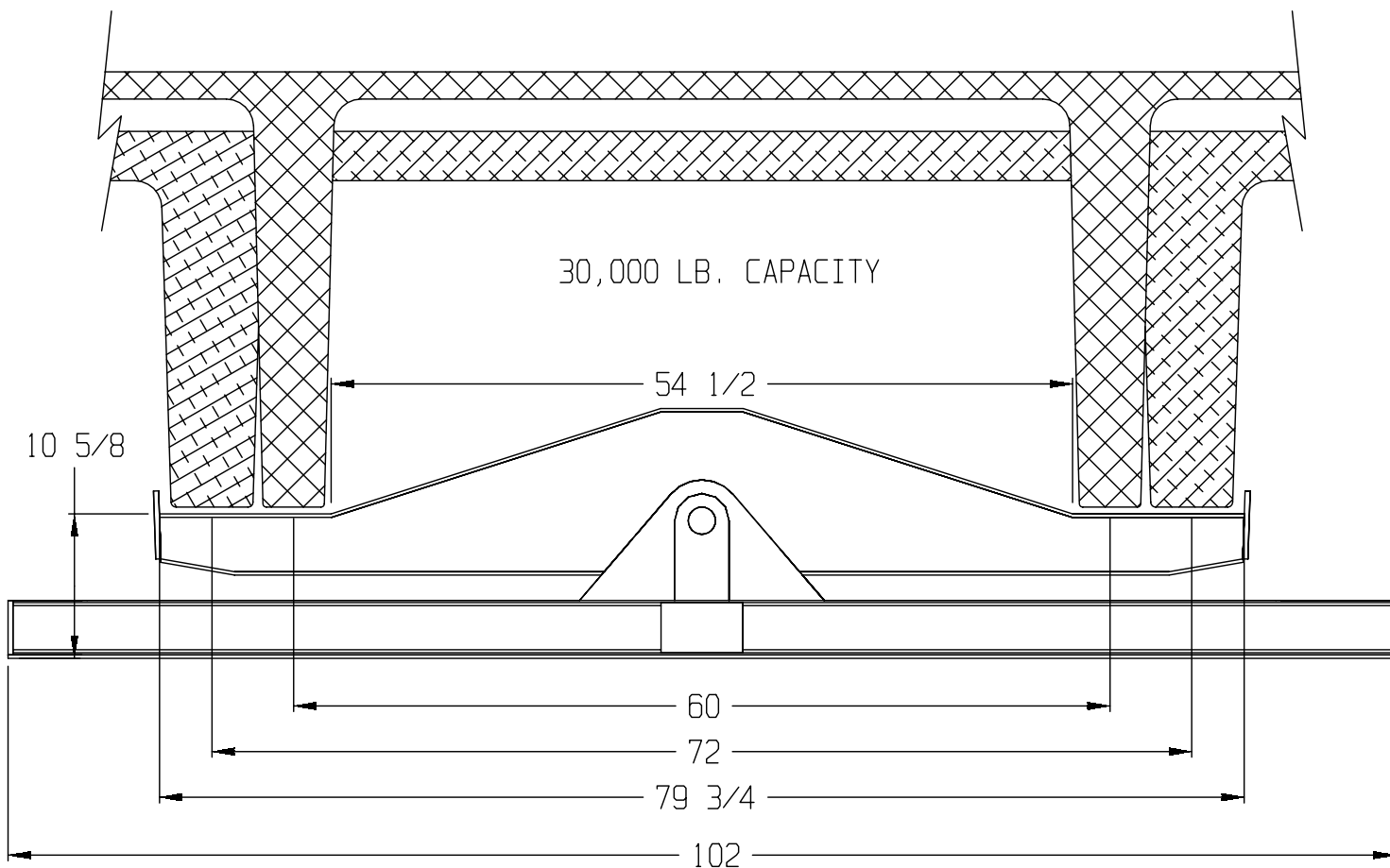


TUCKERBILT® DOUBLE TEE ROCKER

establishes 3-point Tee support, allowing trailer to flex independently

ROCKER SPECS:		BASE SPECS:	PAINT SPECS:
Capacity:	30,000 lbs 10' OR 12' Double Tees	Slotted For 96" Or 102" Trailer Each side is held down by (2) 3/4" J-Bolts	2 Part Epoxy Paint (White)
Roll Capacity:	9 1/2°		
Dimensions:	12" Wide, Overall Width 17 1/2"		
Pivots on Greased Hardened Steel Bushings (2) 1" D-Lashing Rings To Chain Product			





TUCKER'S

MACHINE & STEEL SERVICE, INC.

DATE

2/2000

PART NO.

94158

JOB

DOUBLE TEE ROCKER

P.O. BOX 492810
LEESBURG, FLORIDA 34749-2810

PHONE 352 787 3157