

Eaton/Charlynn Steering Valve 233-4005 Tucker # 80205-10
 Steering Column 204-1002 Tucker # 80205-12
 Steering Wheel 209-1016-001 Tucker # 80208-10

Tuckerbilt Hydraulic
 Cylinders 81050

Tuckerbilt Hydraulic
 Cylinders 81050

Vickers Counter Balance
 Housing # 02-160853
 Cartridge # 02-171990
 Housing Tucker # 80215B
 Cartridge Tucker # 80215C

Gresen Cross Port Relief
 # DWV50@2000
 Tucker # 80113

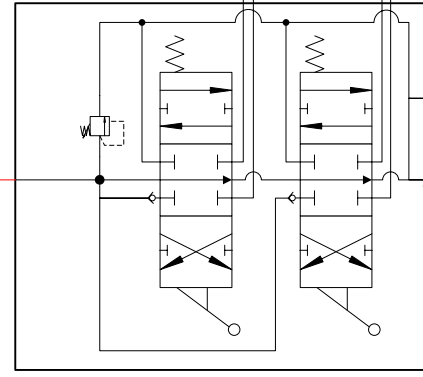
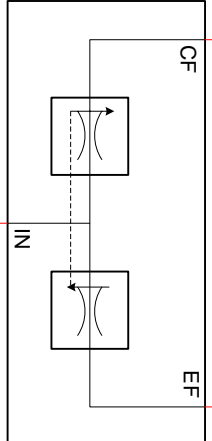
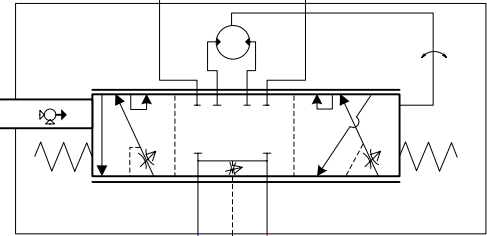
Swing

Charlynn Motor
 #104-1035
 Tucker # 80103

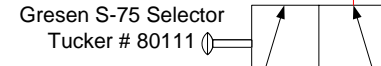
Auger

Charlynn Motor
 #119-1030
 Tucker # 80102

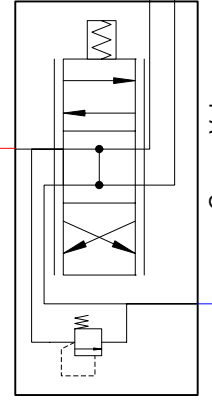
Gresen Valve
 V42 Single Spool w/Relief
 Set to 2250 PSI
 Tucker # 80108



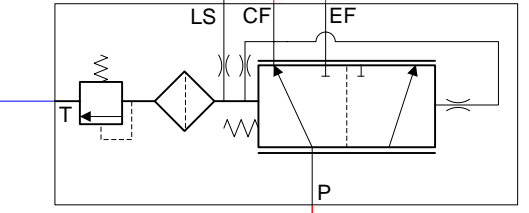
Gresen SP4-4-HP Valve
 Tucker # 80104



Gresen S-75 Selector
 Tucker # 80111

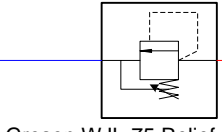


Gresen Filter
 FLR4155EDNH
 Tucker # 80101

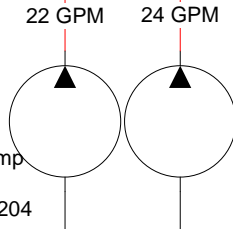


Eaton/Charlynn Priority Valve
 # 606-1345-002-QA
 Tucker # 80205-11

Prince Flow Divider RD-455-5
 Tucker # 80109-01



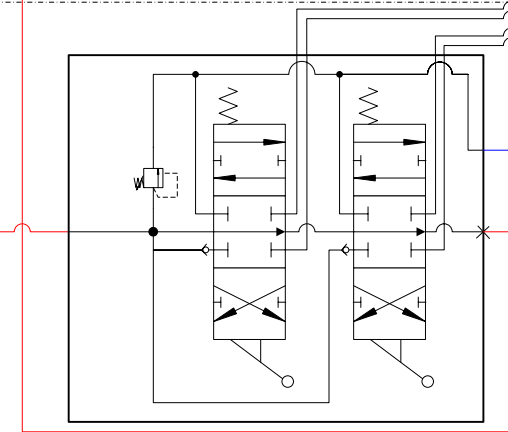
Gresen WJL-75 Relief
 Set to 2000 PSI
 Tucker # 80211



Vickers Pump
 4301994
 Tucker # 80204

Michigan Fluid Power
 Strainer SU65SF32
 Tucker # 80100

Optional Valve & Cylinders for
 Spout Gate and Hopper Cover



Gresen Valve: SPXTE-4-4-HP Tucker # 80703-2
 w/Power Beyond Plug: K-SP-75-Y Tucker # 80704

Spout Gate Cyl
 Tucker # 81979-701

Hopper Cover
 Cyl

Counter Balance
 Valve as above

Cylinder
 Tucker # 80316

T-630 Auxiliary Hydraulic Circuit
 With Charlynn Steering System
 Optional Spout Gate & Hopper Cover
 Valve & Cylinders