

Tucker's Machine & Steel Service, Inc.

TUCKERBILT®

T-644 Concrete Transporter



Hopper Mounted Tier IV
Engine! Easy Access!

Enclosed Climate
Controlled Cab!

Longer Chute!
Higher Reach!

Improved Operator and
Mechanical Safety!

Tuckerbilt Tough!



Tuckerbilt® T-644 Concrete Transport Vehicle Specifications

WEIGHT Approximately 22,500 Lbs (10,206 Kg)

ENGINE JCB 320/50427 Engine Tier IV Certified
145 Continuous Bhp @ 2200 RPM

CAN Technology adjusts RPM to horsepower required for maximum fuel economy!

TRANSMISSION Danfoss H1 Hydrostatic Drive.

Speed infinitely variable to maximum of 13 MPH (21 KM) with Creep Mode setting for efficient pouring at the Form. Maximum grade 6%.

WORK FUNCTION PUMP-VALVING Pressure compensated
CAN controlled for HP on Demand. Fuel Savings!

ARTICULATED STEERING Standard Feature for greatest maneuverability.

11 Ft. (335cm) Inside Tires Turning Radius

20 Ft. (610cm) Outside Tires Turning Radius

AXLES Rear: 28,000 Lb. (12,700 KG) solid mount with planetary reduction.

Front: 20,000 Lb. (9,072 Kg) air bag mounted for smoother ride. Drum-type air actuated brakes with safety braking system in case of failure. Spring Brakes for parking.

TIRES 17.5 x 25 (445.5mm x 635mm) Loader type

HOPPER Capacity: 6 yards (4.58m³). Integrated Splash Deflector. Swing Hydraulic - 90 degrees left and right for full 180 degree reach. Lift: Hydraulic. Vibrators: Air

AUGER- TROUGH Infinitely adjustable speed.

Almost 50% faster delivery than models preceding 2010. Almost 2 Ft Higher Reach. 14" (355mm) diameter- 3/8" (9.52mm) thick AR Plate. Handles low-slump, standard mix, or SCC.

Trough: 15" (381mm) diameter - 3/16" (4.76mm) thick - abrasion-resistant alloy.

ENCLOSED CLIMATE CONTROLLED CAB

Air Conditioned and heated for reduced exposure to elements.

Operator adjustable suspension seat with operator present switch. Ergonomic design and ride.

Equipped with dual joysticks for full fingertip control of all functions.

TRI-VIEW CAMERAS 3 Cameras.

1 rear facing, 1 on each side. Always On, in cab display for maximum visibility & safety.

ACCESSORIES

4 work lights, 2 head lights, 2 backup lights.

Rear pointed Radar with In Cab alert when approaching danger

Painted White and Blue.

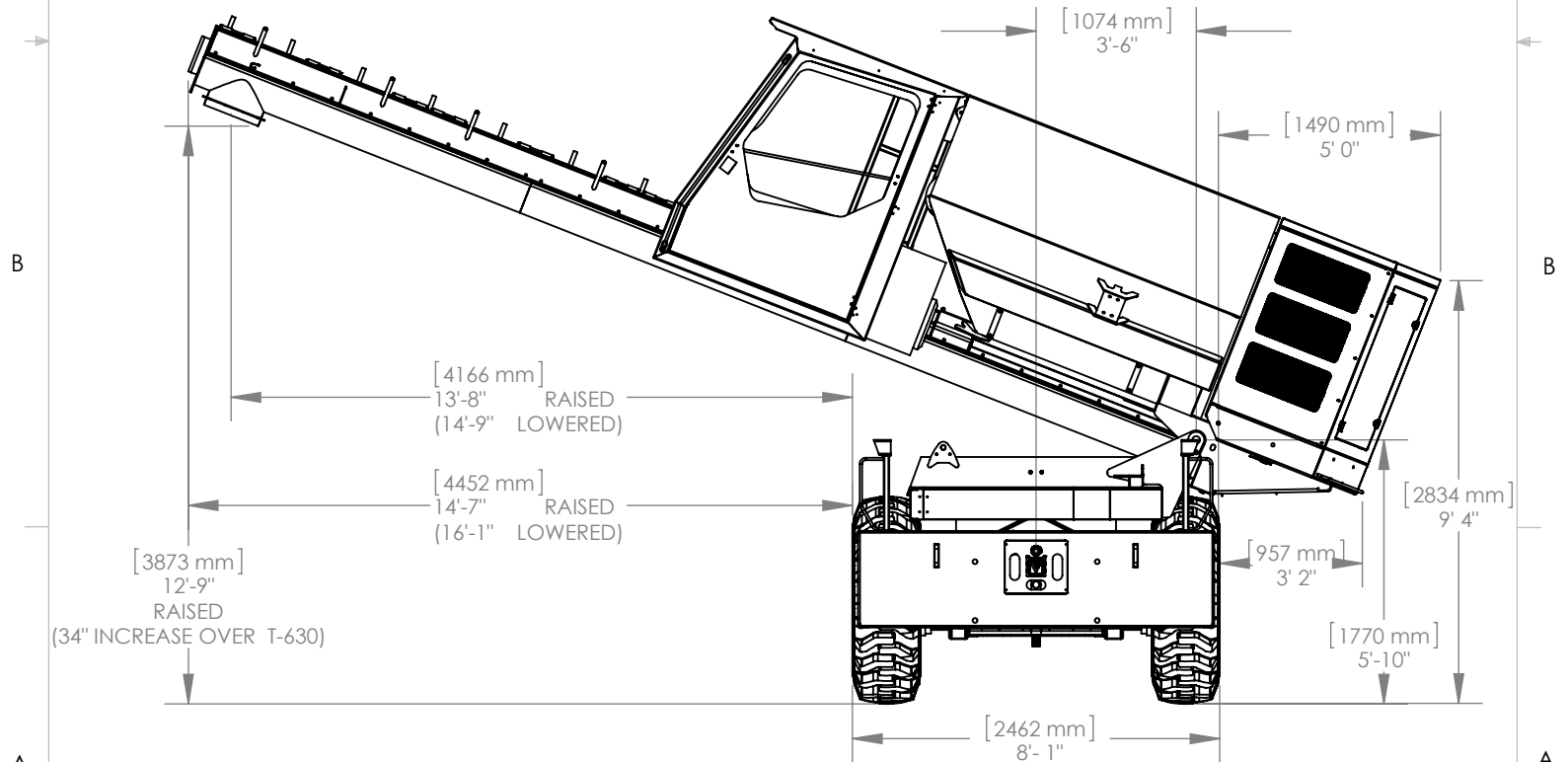
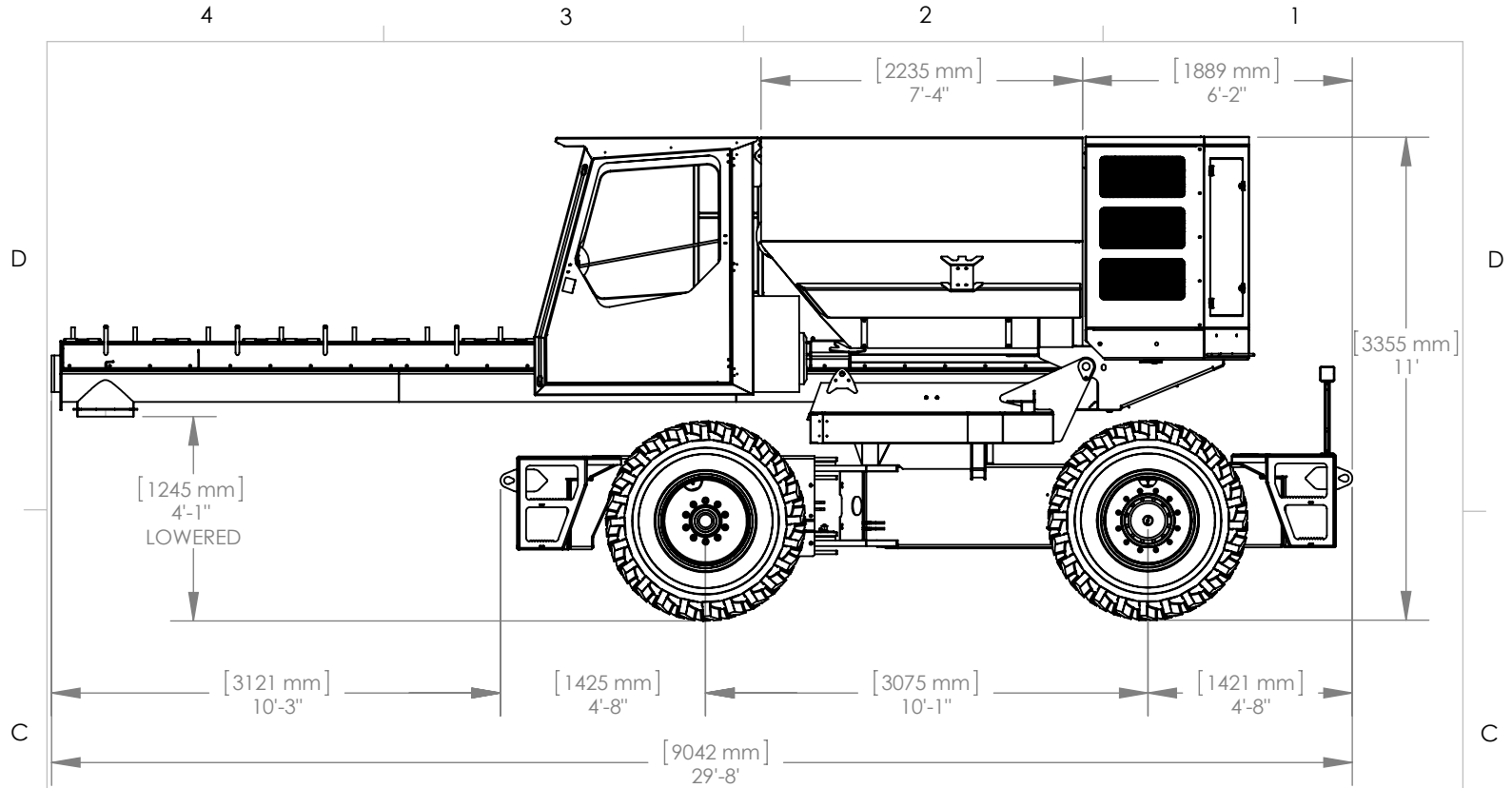
CAN TECHNOLOGY Latest CAN technology allowing for:

Improved Diagnostics

Improved Operator Safety Features

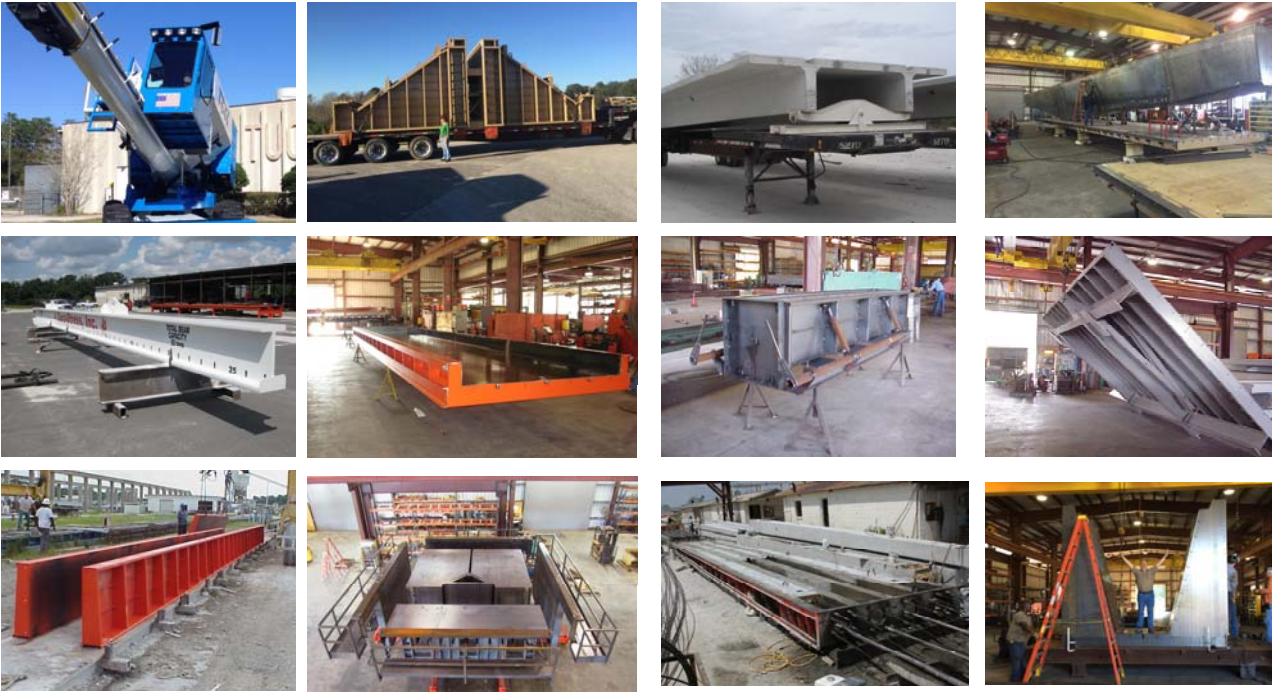
Improved Mechanical Safety Features

Maintenance Logging



T-644 Overall Dimensions		DR. BY M.C.T.
		DATE 2/24/16
Specifications, descriptions and illustrative material in this literature are as accurate as known at the time of publication, but are subject to change without notice.		LOCKER'S

We're more than just ...



Tucker's Machine and Steel
400 County Road 468
Leesburg, FL 34748
352-787-3157
Sales_Info@Tuckerbilt.com



We're on the Web!
www.Tuckerbilt.com

